



Leadership Team



Sir Bob Kerslake

Head of the Civil Service
and Permanent Secretary

- Department lead; advises Ministers; and Accounting Officer
- Ensures Department's objectives are delivered and enhances immediate and longer term capability with strong governance and accountability
- Head of the Civil Service for providing professional and corporate leadership

pspermanentsecretary@
communities.gsi.gov.uk



Helen Edwards

Director General, Localism and
Deputy Permanent Secretary

- Local government finance and policy
- Fire, resilience and emergencies
- Neighbourhood empowerment
- Integration and faith

helen.edwards@communities.gsi.gov.
uk



Andrew Campbell

Director General, Finance and
Corporate Service

- Finance, human resources, change, legal, analysis, communications, estates, information technology, procurement, private offices and internal audit
- Efficiency and reform, transparency, digital communication and equality
- Cross-government management information and financial reporting
- Performance and Places team

andrew.campbell@communities.gsi.gov.uk



Louise Casey CB

Director General, Troubled
Families

- Delivery of Prime Minister's ambition to turn around the lives of 120,000 troubled families by the end of this parliament

louise.casey@communities.gsi.gov.uk



David Rossington

Director, Finance

- Departmental finance, procurement, information technology and estates
- Teams in Hastings, Hemel Hempstead, Manchester, Leeds, Liverpool, London and Nottingham

david.rossington@communities.gsi.
gov.uk



Peter Schofield

Director General, Neighbourhoods

- Planning, housing and local economic growth

peter.schofield@communities.gsi.gov.
uk



David Hill

Director, Strategy and Private
Offices

- Supporting Ministers in articulating and driving the delivery of Ministerial priorities across the Department

david.hill@communities.gsi.gov.uk



Non-Executive Directors



Sara Weller

Lead Non-Executive Director

- Expanded Argos online and opened 30 stores per year since 2004
- Previously on the board and Deputy Managing Director at Sainsbury's plc, Consumer Marketing Director at Abbey National and Consumer Development Director for Europe at Mars

PSBoardSecretary@communities.gsi.gov.uk



Stephen Hay

Non-Executive Director

- Responsible for the authorisation, compliance and intervention teams at the regulator for NHS Foundation Trust hospitals
- Previously worked with KPMG, as a director where he advised boards of corporate and private equity houses

PSBoardSecretary@communities.gsi.gov.uk

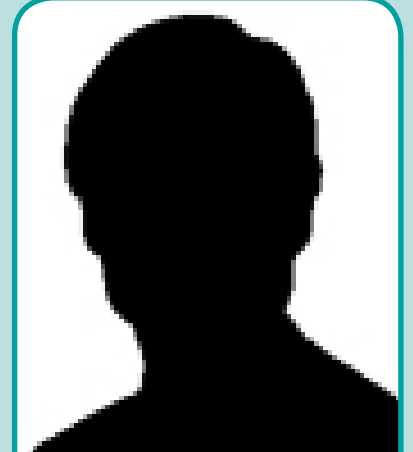


Nick Markham

Non-Executive Director

- Chief Executive Officer of Top Up TV
- Previously worked for ITV, Laura Ashley and as a management consultant with Bain.
- Chairman and founder of Safe Haven, social enterprise charity that provides 200 homes for the homeless in London.

PSBoardSecretary@communities.gsi.gov.uk



Vacant

Non-Executive Director



Localism



Helen Edwards

Director General, Localism and
Deputy Permanent Secretary

- Local government finance and policy
- Fire, resilience and emergencies
- Neighbourhood empowerment
- Integration and faith

helen.edwards@communities.gsi.gov.uk



Simon Ridley

Director, Local Government
Finance

- Local government revenue and capital spending policy, grant distribution, business rates and council tax
- Local government and firefighter pension schemes
- Local government pay

simon.ridley@communities.gsi.gov.uk



Mark Carroll

Director, Decentralisation and Big
Society

- Integrated communities
- Tackling extremism and tackling hate crime
- Neighbourhood budgets and community rights
- Decentralisation and neighbourhood planning

mark.carroll@communities.gsi.gov.uk



Neil O'Connor

Director, Fire, Resilience and
Emergencies

- Fire and rescue policy, national resilience, finance and statutory frameworks
- Resilience and emergencies management
- Teams in Birmingham, Bristol, Hemel Hempstead, Leeds & London

neil.o'connor@communities.gsi.gov.uk



Patrick White

Director, Local Government Policy

- Local service reform, efficiency, transparency, accountability and standards lead
- Local Government Ombudsman sponsor and closure of the Audit Commission

patrick.white@communities.gsi.gov.uk



Neighbourhoods



Peter Schofield

Director General, Neighbourhoods

- Planning, housing and local economic growth
- peter.schofield@communities.gsi.gov.uk



Terrie Alafat

Director, Housing

- Boost supply of new homes and improve affordability
- Affordable housing investment, management and regulation
- Private rented sector, property management and growth in the market rented sector
- Housing Strategy
- Homelessness, housing support, repossessions and ageing population
- Teams in Manchester and London

terrie.alafat@communities.gsi.gov.uk



Ruth Stanier

Director, Planning

- Reform of the planning system to facilitate sustainable development
- Advice to Ministers on all aspects of planning policy and guidance
- Local Plan Making, Neighbourhood Planning and Development Management
- National planning casework and management of the Planning Portal
- Sponsorship of the Planning Inspectorate
- Teams in Bristol, Birmingham, Leeds, London and Plymouth

ruth.stanier@communities.gsi.gov.uk



Philip Cox

Director, Local Economies, Regeneration and European Programmes

- Growth, Enterprise Zones, Heseltine, High Streets, Olympic legacy, Thames Gateway, housing market renewal legacy and ERDF programmes
- Teams in Birmingham, Bristol, Cambridge, Exeter, Leeds, London, Newcastle, Nottingham, Plymouth, Sheffield, Truro and Warrington

philip.cox@communities.gsi.gov.uk



Sir Michael Pitt

Chief Executive, Planning Inspectorate*

- Planning and enforcement appeals
- Public examination of local plans
- Nationally significant infrastructure projects

(Assistant's email - natalina.dimeo@pins.gsi.gov.uk)

* Executive Agency



Bob Ledsome

Deputy Director, Building Regulations and Standards

- Building regulations
- Building control system
- Zero carbon buildings and local housing standards

bob.ledsome@communities.gsi.gov.uk



Finance and Corporate Services



Andrew Campbell

Director General, Finance and Corporate Service

- Finance, human resources, change, legal, analysis, communications, estates, Information technology, procurement, private offices and internal audit

- **Efficiency and reform, transparency,** digital communication and equality

- Cross-government management information and financial reporting

- **Performance and Places team**

andrew.campbell@communities.gsi.gov.uk



David Rossington

Director, Finance

- Departmental finance, procurement, information technology and estates

- Teams in Hastings, Hemel Hempstead, Manchester, Leeds, Liverpool, London and Nottingham

david.rossington@communities.gsi.gov.uk



Jon Whitfield

Director, Internal Audit

- Shared Service for five government departments and 30 ALBs

- Audit programmes to provide assurance over governance, risk management and internal control systems and mitigation

- Teams in Birmingham, Bristol, Cambridge, Leeds, Liverpool, London and Manchester

jon.whitfield@communities.gsi.gov.uk



Stephen Braviner-Roman

Director, Legal

- Shared Service with Treasury Solicitors

- Ministerial advice on legal matters

- Primary and secondary legislation

- Defending legal challenges in court

stephen.braviner-roman@communities.gsi.gov.uk



George Eykyn

Director, Communication

- Communications strategic direction, press office and campaigns & marketing

- Digital and internal communication

george.eykyn@communities.gsi.gov.uk



Stephen Aldridge

Director, Analysis and Innovation

- Chief Analyst and Economist

- Interim Chief Scientific Adviser

- Deregulation

- Innovation

stephen.aldridge@communities.gsi.gov.uk



Dawn Brodrick

Director, People, Capability and Change

- Better Department, Civil Service reform, organisational design, staff engagement, performance management, learning & development, business partnering, leadership, talent management, resourcing and pay & reward

- Teams in Liverpool and London

dawn.brodrick@communities.gsi.gov.uk



Troubled Families



Louise Casey CB

Director General, Troubled Families

- Delivery of Prime Minister's ambition to turn around the lives of 120,000 troubled families by the end of this parliament

louise.casey@communities.gsi.gov.uk



Joe Tuke

Director, Troubled Families Team

- 2015 target of improving lives of 120,000 troubled families
 - Payment by results arrangements with all upper-tier local authorities in England
- joe.tuke@communities.gsi.gov.uk



Ian Brady

Deputy Director, Troubled Families Team

- Operational delivery
 - Network for Troubled Families co-ordinators across England
- ian.brady@communities.gsi.gov.uk



Daisy Yates

Acting Deputy Director, Troubled Families Team

- Communications and strategy
- daisy.yates@communities.gsi.gov.uk
- (currently on maternity leave)*



Emma Jones

Acting Divisional Deputy Director, Troubled Families Team

- Cross Whitehall work
 - Corporate performance
 - Finance
 - Programme evaluation
- Emma.Jones@communities.gsi.gov.uk



Strategy and Private Offices



David Hill

Director, Strategy and Private
Offices

- Supporting Ministers in articulating and driving the delivery of Ministerial priorities across the Department
- david.hill@communities.gsi.gov.uk



Alastair Murray

Deputy Director, Strategy

- Horizon scanning to identify and assess future challenges
 - Supporting Ministers and the Executive to develop departmental strategy
 - Co-ordinating the department's engagement with the centre and other Government Departments
- alastair.murray@communities.gsi.gov.uk



Tom Wechsler

Principal Private Secretary

- Secretary of State's private office
 - Ministerial private offices
 - Parliamentary and correspondence
- Tom.Wechsler@communities.gsi.gov.uk



Decentralisation and Big Society

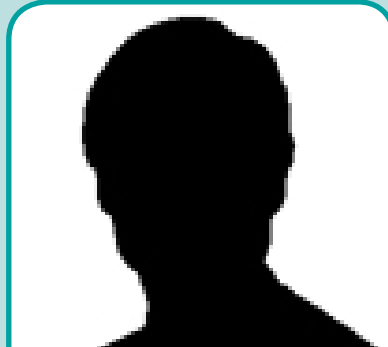


Mark Carroll

Director, Decentralisation and Big Society

- Integrated communities
- Tackling extremism and tackling hate crime
- Neighbourhood budgets and community rights
- Decentralisation and neighbourhood planning

mark.carroll@communities.gsi.gov.uk



Aiden Wilkie

Deputy Director, Decentralisation and Neighbourhood Planning

- Neighbourhood planning and legislation
- Neighbourhood planning implementation including support and resources

(joining DCLG on 18 Nov 2013)



Ben Llewellyn

Deputy Director, Big Society and Community Rights

- Community right to challenge and right to bid
- Parishes and neighbourhoods
- Community budgets
- Community engagement policy

ben.llewellyn@communities.gsi.gov.uk



Stuart Hoggan

Deputy Director, Integration

- Integration in local communities
- Faith
- Tackling inequalities for gypsy and traveller communities
- International race and minorities issues
- Equalities promotion

stuart.hoggan@communities.gsi.gov.uk



Vanessa Scarborough

Deputy Director, Tackling Extremism and Hate Crime

- Tackling extremism and integration
- Tackling religious hate crime

vanessa.scarborough@communities.gsi.gov.uk



Local Government Policy and Productivity



Patrick White

Director, Local Government Policy

- Local service reform, efficiency, transparency, accountability and standards lead
- Local Government Ombudsman sponsor and closure of the Audit Commission

patrick.white@communities.gsi.gov.uk



Shehla Husain

Deputy Director, Transparency and Accountability

- Corporate and local transparency
- Transforming services - shared services, commissioning, procurement
- Waste

shehla.husain@communities.gsi.gov.uk



Nick Dexter

Deputy Director, Community Budgets and Head of Local Audit

- Whole-place community budgets development and implementation

nick.dexter@communities.gsi.gov.uk



Paul Rowsell

Deputy Director, Democracy

- Local governance reform to decentralise power, reinvigorate local democracy, and to support and incentivise local growth

paul.rowsell@communities.gsi.gov.uk



Rosie Seymour

Deputy Director, Local Public Service Reform

- Spending Round 2015 preparations
- Cross-government work to influence and shape reform of local public services

Local Governance Research Unit
rosie.seymour@communities.gsi.gov.uk



Fire, Resilience and Emergencies



Neil O'Connor

Director, Fire, Resilience and
Emergencies

- Fire and rescue policy, national
resilience, finance and statutory
frameworks

- Resilience and emergencies
management

- Teams in Birmingham, Bristol,
Hemel Hempstead, Leeds &
London

neil.o'connor@communities.gsi.gov.
uk



James Cruddas

Deputy Director, Resilience and
Emergencies Management

- Resilient localities, including
high impact wide area emergency
planning, response and recovery

- Facilitating government support
when emergencies occur

- Teams in Birmingham, Bristol,
London and Leeds

james.cruddas@communities.gsi.gov.
uk



Dawn Eastmead

Deputy Director, National Fire
Policy

- Legislative, governance and
financial frameworks

- Fire safety, strategy, industrial
relations, pay and workforce
issues

- Reform

- Directorate support and
communications

dawn.eastmead@communities.gsi.
gov.uk



Jane Cockerill

Deputy Director, National
Resilience and Fire programmes

- Fire and Rescue Service role in
National Resilience

- National Resilience
communications policy

- National fire contracts

- Interoperability with other blue
light services

- Fire statistics and analysis
- Teams in Birmingham, London
and Hemel Hempstead

jane.cockerill@communities.gsi.gov.
uk



Peter Holland

Chief Fire and Rescue Adviser

- Independent adviser on fire and
rescue issues to Government

- National emergency co-
ordination of fire and rescue
service assets

- Enforcement of the Regulatory
reform (Fire Safety) Order 2005 in
crown premises

peter.holland@communities.gsi.gov.
uk



Local Government Finance



Simon Ridley

Director, Local Government
Finance

- Local government revenue and capital spending policy, grant distribution, business rates and council tax
 - Local government and firefighter pension schemes
 - Local government pay
- simon.ridley@communities.gsi.gov.uk



Vacant

Deputy Director, Business Rates & Settlement

- Local Government Finance Settlement
- Policy on Business Rates and Valuation



Janet Dougharty

Deputy Director and Chief Statistician, Local Government Finance

- Local government accountancy advice
- Local government finance, data, modelling and analysis

janet.dougharty@communities.gsi.gov.uk



Nick Burkitt

Deputy Director, Strategy, Revenue and Capital

- Local government revenue, capital finance and new burdens policy
- Local government finance formula grant payments
- Local authority and parish borrowing

nick.burkitt@communities.gsi.gov.uk



Hulya Mustafa

Deputy Director, Council Tax

- Council tax freeze, referendums and changes to discounts and exemptions
- Localisation council tax support from April 2013

Hulya.Mustafa@communities.gsi.gov.uk



Chris Megainey

Deputy Director, Workforce, Pay and Pensions

- Local government and Firefighter pension schemes
- Local government pay and workforce issues

chris.megainey@communities.gsi.gov.uk



Housing



Terrie Alafat

Director, Housing

- Boost supply of new homes and improve affordability
- Affordable housing investment, management and regulation
- Private rented sector, property management and growth in the market rented sector
- Housing Strategy
- Homelessness, housing support, repossessions and ageing population
- Teams in Manchester and London

terrie.alafat@communities.gsi.gov.uk



Katy Willison/Jessie Hamshar

Deputy Director, Private Sector Property (jobshare)

- Expanding Private Rented Sector
- Landlords and Tenants
- Empty Homes

PSP_Deputy_Director@communities.gsi.gov.uk



Paul Downie OBE

Deputy Director, Homelessness and Support

- Homelessness
- Rough Sleeping
- Supported Housing

paul.downie@communities.gsi.gov.uk



Graham Duncan

Deputy Director, Affordable Housing Regulation and Investment

- Affordable housing
- Regulation and Investment
- Social Rent policy
- Homes and Communities Agency sponsorship

graham.duncan@communities.gsi.gov.uk



Jane Todorovic

Deputy Director, Affordable Housing Management and Standards

- Local Authority Housing
- Allocations
- Tenants
- Decency
- Council Housing finance

jane.todorovic@communities.gsi.gov.uk



Emma Fraser

Deputy Director, Housing Growth

- Large Sites
- Public Sector Land Programme
- Get Britain Building
- West Northants Development

Corporation sponsor
emma.fraser@communities.gsi.gov.uk



Jack Lee

Deputy Director, Housing Strategy and Markets

- Supply
- Demand
- Help to Buy
- Strategy and Co-ordination

jack.lee@communities.gsi.gov.uk



Department for
Communities and
Local Government



Bob Ledsome

Deputy Director, Building
Regulations and Standards

- Building regulations
- Building control system
- Zero carbon buildings and local housing standards

bob.ledsome@communities.gsi.gov.uk

Building Standards and Climate Change



Hannah-Jane McNamara

Deputy Director, Climate Change
and Sustainable Buildings

- EU energy performance of buildings directive (EPCs, DEC's and air conditioning inspection reports)
- Climate change, emissions reduction and support for the Green Deal

hannah-jane.mcnamara@
communities.gsi.gov.uk



Local Economics, Regeneration and European Programmes



Philip Cox

Director, Local Economies,
Regeneration and European
Programmes

- Growth, Enterprise Zones, Heseltine, High Streets, Olympic legacy, Thames Gateway, housing market renewal legacy and ERDF programmes
- Teams in Birmingham, Bristol, Cambridge, Exeter, Leeds, London, Newcastle, Nottingham, Plymouth, Sheffield, Truro and Warrington

philip.cox@communities.gsi.gov.uk



Tom Walker

Deputy Director, Local Enterprise
Zones and Local Enterprise

- Local enterprise partnerships and enterprise zones
- Portas review of the High Street and Coalfields regeneration programme
- Physical regeneration projects and policies

tom.walker@communities.gsi.gov.uk



David Morris

Deputy Director, Local Growth and
Regeneration Strategy

- Growing Places Fund, City Deals, Regional Growth Fund, Coastal Community Fund, Thames Gateway and regeneration policy

- Teams based in Warrington, Birmingham, London and Guildford

david.morris@communities.gsi.gov.uk



Carol Sweetenham

Deputy Director, European
Regional Development Fund

- Policy and strategy
- Closure of 2000-2006 programme
- Implementation of 2014-20 programme
- European Structural Fund transfer business case
- Interreg
- Project management and governance

carol.sweetenham@communities.gsi.gov.uk



David Malpass

Deputy Director, European
Regional Development Fund

- ERDF and Regional Growth Fund programme delivery network
- Teams based in Birmingham, Bristol, Cambridge, Exeter, Guildford, Leeds, Warrington, Newcastle, Nottingham, Plymouth, Sheffield, London and Truro

david.malpass@communities.gsi.gov.uk



Julie Carney

Deputy Director, Highstreets and
Regeneration

- High street strategy, the Future High Streets Forum, and support for the markets sector;
- Olympic legacy, Thames Gateway and Coastal Communities Fund
- Coalfields regeneration programme, and physical regeneration and projects and policies.

julie.carney@communities.gsi.gov.uk



Planning



Ruth Stanier

Director, Planning

- Reform of the planning system to facilitate sustainable development
- Advice to Ministers on all aspects of planning policy and guidance
- Local Plan Making, Neighbourhood Planning and Development Management
- National planning casework and management of the Planning Portal
- Sponsorship of the Planning Inspectorate
- Teams in Bristol, Birmingham, Leeds, London and Plymouth

ruth.stanier@communities.gsi.gov.uk

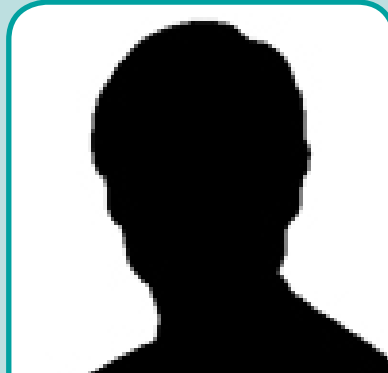


Steve Quartermain

Chief Planner

- Head of profession for planning
- Government advisor on planning policy and practice
- Planning casework
- Teams in Birmingham, Bristol, Plymouth, London and Leeds

steve.quartermain@communities.gsi.gov.uk



Vacant

Deputy Director, Development Management

- Planning simplification, application and appeals
- Permitted development rights and use classes
- Enforcement and compulsory purchase orders



Jane Everton

Deputy Director, Development Plans

- Local and strategic planning
- Planning practice guidance review
- Local Authority performance on planning applications
- Liaison with LGA's Planning Advisory Service
- Planning Inspectorate and Planning Portal sponsor

jane.everton@communities.gsi.gov.uk



Steph Hurst

Deputy Director, Infrastructure, Planning and Environment

- Major infrastructure
- Environmental issues
- Environmental assessment for plans and projects policy

stephanie.hurst@communities.gsi.gov.uk



Mark Lee

Deputy Director, Economic and Social Planning

- Community Infrastructure Levy
- Section 106 agreements
- Planning policy on economic and social matters, including housing and gypsies and travellers

mark.lee@communities.gsi.gov.uk



Jon Whitfield

Director, Internal Audit

- Shared service for five government departments and 30 arms length bodies
- Audit programmes to provide assurance over governance, risk management and internal control systems and mitigation
- Teams in Birmingham, Bristol, Cambridge, Leeds, Liverpool, Nottingham, Plymouth, London and Manchester

jon.whitfield@communities.gsi.gov.uk



Mike Reed

Deputy Director, Internal Audit

- Shared service audit programme for five government departments and 30 arms length bodies
- Audit Authority for ERDF, European Commission assurances on fund management and control systems
- Teams in Birmingham, Bristol, Cambridge, Leeds, Liverpool, Manchester, Newcastle, London, Nottingham, Plymouth and Sheffield

mike.reed@communities.gsi.gov.uk



People, Capability and Change



Dawn Brodrick

Director, People, Capability and
Change

- Better Department, Civil Service reform, organisational design, staff engagement, performance management, learning & development, business partnering, leadership, talent management, resourcing and pay & reward

- Teams in Liverpool and London

dawn.brodrick@communities.gsi.gov.uk



Lorraine Shepherd

Deputy Director, Change

- Better Place to Work programme
- Better Department
- Civil Service Reform Plan
- Departmental Improvement Plan

lorraine.shepherd@communities.gsi.gov.uk



Andrew Kean

Deputy Director, Human Resource
Strategy and Policy

- Senior HR Business Partner to DG Localism
- Pay, reward and performance management

- HR policy, staff handbook and employee relations

andrew.kean@communities.gsi.gov.uk



Gillian Nicholson

Deputy Director, Organisational
Effectiveness

- HR Business Partner to Neighbourhoods
 - Workforce planning, learning and development
 - Capability and planning
 - Fast Stream
 - Organisation Development, Performance Management, Talent Management (inc. SCS performance)
 - 2013 Staff Survey
- gill.nicholson@communities.gsi.gov.uk



Bob Hall

HR Operations, Service Centre

- Data, Management Information and Analysis
- Pensions, Payroll Casework, Business Appointment rules
- Pension ETs

bob.hall@communities.gsi.gov.uk



David Onigbanjo

Head of Resourcing

- Senior HR Business Partner to DG Finance & Corporate Services
- Recruitment
- Vacancy control
- Public Appointments

David.Onigbanjo@communities.gsi.gov.uk



Finance



David Rossington

Director, Finance

- Departmental finance, procurement, information technology and estates
 - Teams in Hastings, Hemel Hempstead, Manchester, Leeds, Liverpool, London and Nottingham
- david.rossington@communities.gsi.gov.uk



Stephanie Lockhart

Deputy Director, Finance Shared Services

- Consolidation group accounts
 - Certifying Authority head (ERDF 2007/13)
 - Finance Shared Services division in Hemel Hempstead - transaction processing including system delivery (SAP)
- stephanie.lockhart@communities.gsi.gov.uk



Susan Candlish

Acting Deputy Director, Corporate Finance

- Management of Departmental Financial Position & HMT Liaison
 - Financial reporting, Governance and Investment Sub-Committee
 - Efficiency, Management Information & Shared Services
 - QEII Conference Centre sponsor; Fraud & NAO VFM studies
- susan.candlish@communities.gsi.gov.uk



Andrew Culver

Deputy Director, Procurement

- Procurement of all goods and services
 - Championing the Small and Medium sized Enterprise agenda and advising on all commercial matters.
 - Teams in Hastings and London
- andrew.culver@communities.gsi.gov.uk



David Kuenssberg

Deputy Director, Finance Business Partnering

- Financial advice, challenge and management information
 - VFM and financial risk management
 - Investment governance
- david.kuenssberg@communities.gsi.gov.uk



Darren Scates

Deputy Director, Chief Information Officer (IT)

- Information management strategy
 - Information and communication technology, libraries and records management
 - Technological implications for local authorities and communities
 - Teams in Hastings and London
- darren.scates@communities.gsi.gov.uk



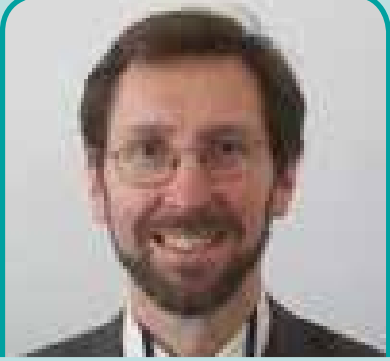
Andy Mills

Deputy Director, Estates Management

- Shared service DCLG and DfE property asset management unit
 - Departmental security unit
 - Teams in Leeds, Liverpool, London and Nottingham
- andrew.mills@communities.gsi.gov.uk



Department for
Communities and
Local Government



Stephen Braviner-Roman

Director, Legal

- Shared service with Treasury Solicitors

- Ministerial advice on legal matters

- Primary and secondary legislation

- Defending legal challenges in court

stephen.braviner-roman@communities.gsi.gov.uk

Legal

Legal Directorate is now part of Treasury Solicitors (Tsol)



Helen Jeffrey

Deputy Director, Regeneration and Commercial Law

- Regeneration, commercial, estate matters
- Troubled families programme, and community right to challenge

helen.jeffrey@communities.gsi.gov.uk



Denise Fowler

Deputy Director, Planning Law

- Compulsory purchase and planning matters and litigation

denise.fowler@communities.gsi.gov.uk



Matthew Stubbs

Deputy Director, Local Government and Fire Law

- Local government finance and fire and rescue matters

matthew.stubbs@communities.gsi.gov.uk



Richard Watson

Deputy Director, Housing, Building and Land Law

- Public and private sector housing, tenure, and homelessness and allocations
- Housing growth, building regulations and energy performance

richard.g.watson@communities.gsi.gov.uk



Richard Swede

Director of Law, Planning Inspectorate

- National infrastructure applications and other planning casework
- Litigation

richard.swede@infrastructure.gsi.gov.uk



George Eykyn

Director, Communication

- Communications strategic direction, press office and campaigns & marketing
- Digital and internal communication

george.eykyn@communities.gsi.gov.uk



Julian Bowrey

Deputy Director, Digital & Corporate Communications

- Digital and other content
- Local government digital programme

julian.bowrey@communities.gsi.gov.uk



Jane Houghton

Deputy Director, External Communications

- Head of News

jane.houghton@communities.gsi.gov.uk



Performance and Places Team



Andrew Campbell

Director General, Finance and
Corporate Service

- Finance, human resources, change, legal, analysis, communications, estates, Information technology, procurement, private offices and internal audit

- Efficiency and reform, transparency, digital communication and equality

- Cross-government management information and financial reporting

- Performance and Places team

andrew.campbell@communities.gsi.gov.uk



Elizabeth Whatmore

Deputy Director, Corporate
Performance

- Departmental performance against priorities and business plan

- Policy stocktakes and delivery assurance

- Head of Profession for Project and Programme Management

elizabeth.whatmore@communities.gsi.gov.uk



Jennifer Ashby

Deputy Director, Welfare Reform

- Welfare reform implementation with DWP, local government and the housing sector

jennifer.ashby@communities.gsi.gov.uk



Vacant

Deputy Director, Localities and London

- Facilitating relationships between localities and the Department

- Departmental policy on London



Stephen Aldridge

Director, Analysis and Innovation

- Chief Analyst and Economist
- Interim Chief Scientific Adviser
- Deregulation
- Innovation

stephen.aldridge@communities.gsi.gov.uk



Ricky Taylor

Acting Deputy Director, Strategic Analysis

- Localism analysis, decentralisation and troubled families
- Ageing population, red-tape, powers of entry review and statement of new regulation

• Economic analysis
ricky.taylor@communities.gsi.gov.uk



David Fry

Deputy Director, Strategic Statistics

- Head of profession for statistics
- Statistical and spatial analysis, including English Housing Survey and Index of Multiple Deprivation
- Housing and planning data collection

david.fry@communities.gsi.gov.uk



Paul Chamberlain

Deputy Director, Neighbourhood Analysis

- Economic advice, statistics production and dissemination of research on local growth, housing, planning and land use

paul.chamberlain@communities.gsi.gov.uk